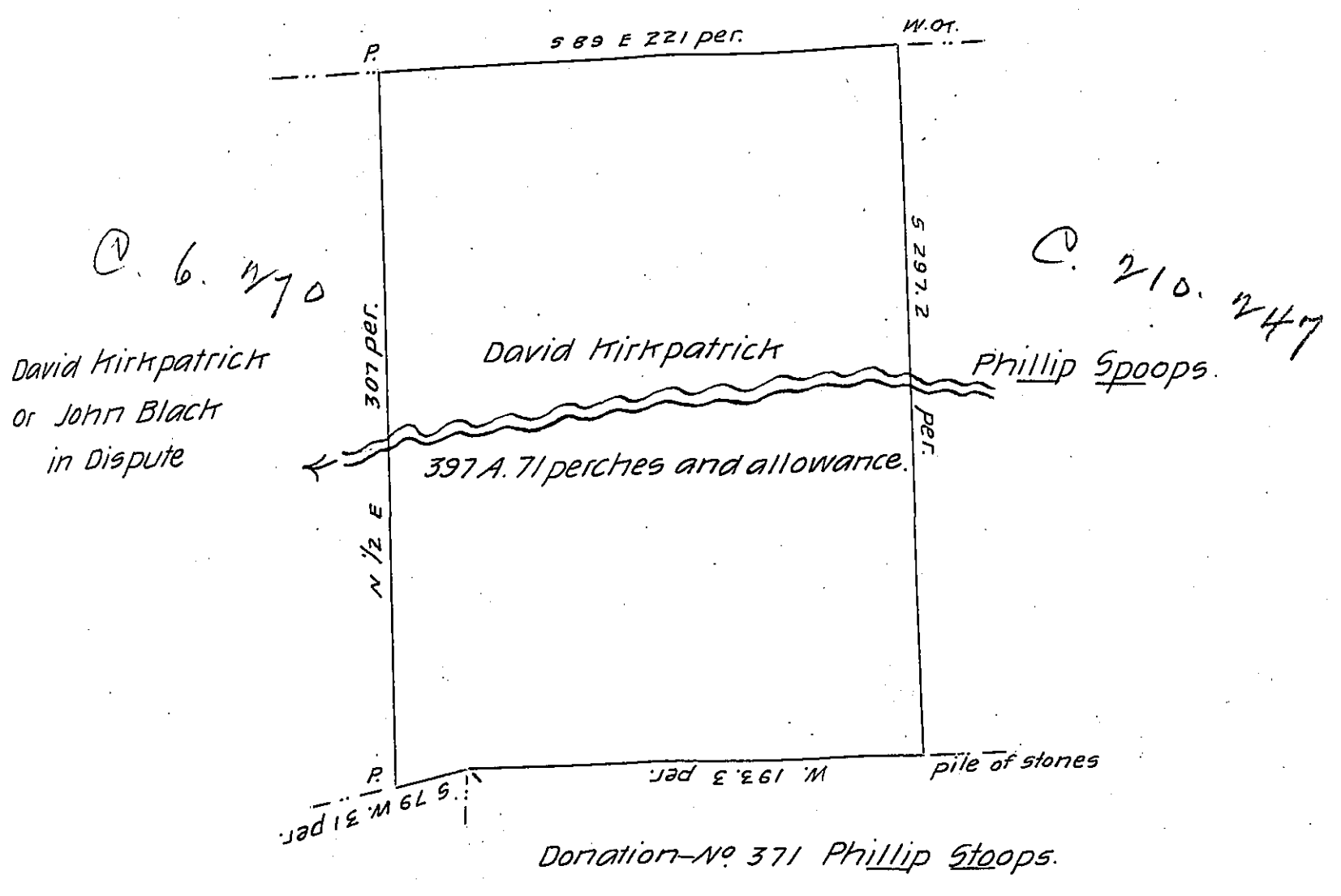


C. 141. 241
— Merr & Murrin



Draft of a Tract of Land Situate in Mercer township Butler County on the waters of Slipperock Creech Containing three hundred ninety seven acres Seventy one perches and allowance Surveyed June 8th 1837 at the instance of David Kirkpatrick by virtue of his settlement and improvement right

T. H. Lyon D.S.

John Taylor Esq
Surveyor General

IN TESTIMONY that the above is a copy of the original remaining on file in the Department of Internal Affairs of Pennsylvania, made conformably to an Act of Assembly approved the 16th day of February, 1833, I have hereunto set my Hand and caused the Seal of said Department to be affixed at Harrisburg, this twenty-seventh day of September 1905.

Loac R. Brown
Secretary of Internal Affairs.